



Multi Site Configuration

Overview

Benchmark Multi-Site CMMS provides access to several Benchmark databases from one computer. Each database or 'site' represents a production plant, a vessel or independent production area with its own maintenance staff.

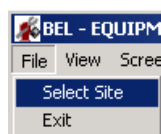
The Benchmark data for each site is located on a single server. Each user works with one database-at-a-time but can switch between databases subject to Benchmark password permission. For example, maintenance personnel from each plant may be allowed access to just their database while managers would be allowed access each database.

A **GLOBAL SPARES** screen shows the parts available in all plants. Its read only screen is available to all. However, changes to spares data is made only in each site - subject to Benchmark password permissions.

ID	PART NBR	DESCRIPTION	SITE	QTY
1	32885K14	NOZZLE, SPRAY, FULL COVE O/F STAMPING PRESS	FIL	11
2	33375	PIN, HORN, P8FX DIE	FIL	0
3	3404K15	NOZZLE, SPRAY, FLAT O/F STAMPING PRESS	FIL	20
4	3842507719	GUSSET W/FASTENER, ALUMINUM STAND -- MISC STANDS	FIL	16
5	3C-30A2-S	FOOT PEDAL B7G	FIL	0
6	3L290-4	BELT, V	FIL	4
7	3M326A	MOTOR, DRIVE 140CV 115V 1.4AMP FOR D-400 MODEL DRYER 4.1RPM	FIL	0
8	40BS27 1	SPROCKET	FIL	2
9	40PH-SS41	QUICK COUPLER	FIL	0

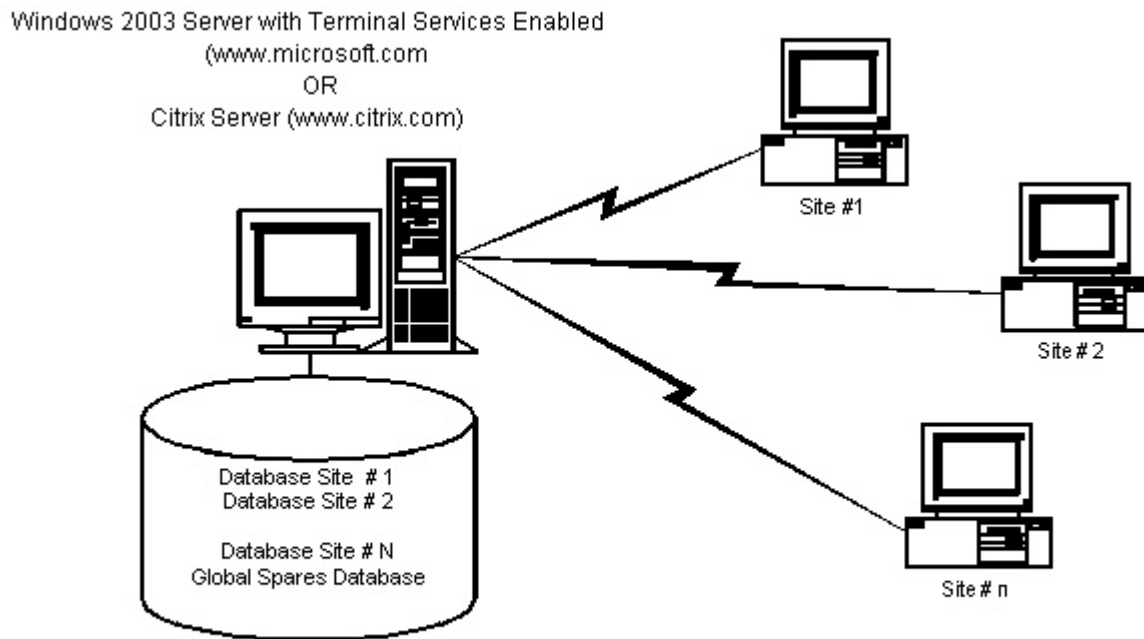
Networking

Switching between Sites is easy. Simply select File → Select Site and then pick the site you want.



A	B	C
1	BEL	Bellevue Plant C:\BMATEDATA_MS\BEL
2	HOU	Houston Plant C:\BMATEDATA_MS\HOU
3	FIL	Filtech Findley C:\BMATEDATA_MS\FIL
4	GLOBAL	C:\BMATEDATA_MS\GLOBAL

Benchmark Multi-Site may be installed on either a Local Area Network (LAN) or on a wide area network or the Internet (WAN) using Windows Server with Terminal Services or a Citrix Server/



Benchmark Multi-Site Configuration

Benchmark Systems, Inc.
PO Box 50222
Bellevue, WA 98015-0222
Phone: (800) 466-1899, (425) 391-2752
Fax: (425) 391-3184
www.benchmark.com
email: support@benchmark.com