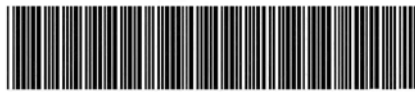




Bar Codes
For
Inventory



PART NBR: **U-FE-RSMT-8303**

NAME: FLOWTUBE MAGNETIC WITH
ULTRA-SONIC CLEANER

LOCATION: FS-12

Benchmark **Bar Codes for Inventory** is a convenient, cost-effective tool for storeroom management. It is ideal for unattended storerooms.

Traditional methods for using full time attendants to track parts issued and to maintain a supply of critical spare parts are too expensive for all but the largest facilities. Log out sheets are inconvenient and often ignored by maintenance technicians in a hurry.

Benchmark offers a convenient, accurate system to track and count parts. It is fully integrated with Benchmark CMMS to provide current spare parts quantities and re-order status. This system consists of:

- Portable, hand-held **bar code scanner**,
- Spare parts **label printer** and,
- **Software module** to integrate the scanner and label printer with the Benchmark database.

Bar Code Scanner



This rugged, hand-held, laser scanner records parts taken and cycle-counts. It eliminates the writing, data entry and inaccuracies associated with paper trails. Each transaction – consisting of the part number and quantity, associated job or cost center, person taking or counting the part plus the date and time – is recorded in the scanner’s memory and periodically transferred to the Benchmark database.

Typically the scanner is placed in its base station at the entrance to the storeroom to be picked up by anyone entering. It is returned when leaving.

Label Printer



This dependable, low-cost label printer prints bar code labels directly from the Benchmark database. Labels can be applied to the parts shelf, containers or the part itself.

When a part is taken or counted, its label is scanned to identify the part.

Software Module



This software is fully integrated with the Benchmark CMMS database. It manages the flow of data and programs to and from the scanner.

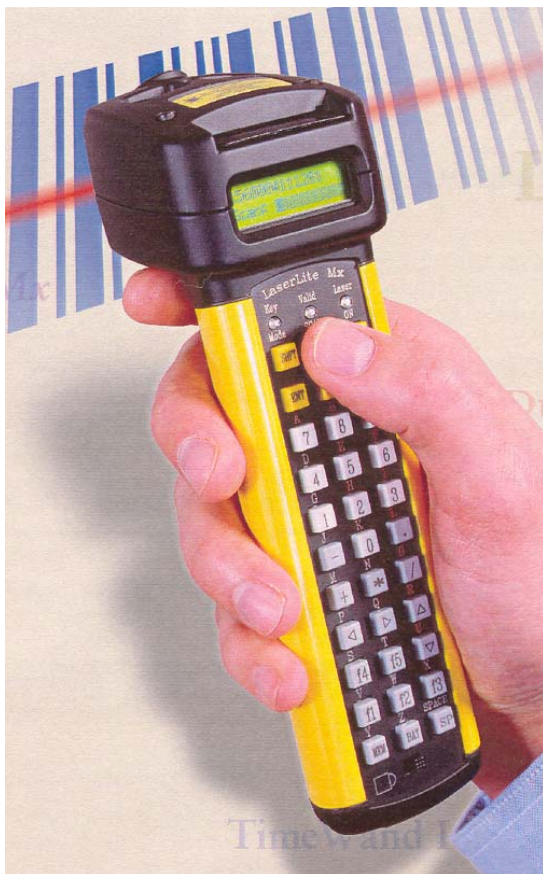
Parts transactions from the scanner are recorded in the Benchmark Inventory Transactions file which then updates the database.

The JOB ID is printed on all Benchmark work tickets to be scanned when parts are taken for a job. Parts can also be issued to Cost Centers.

Bar Code Scanner

Benchmate uses the Videx **LaserLite Pro** bar code scanner. This dependable scanner is held and operated with one hand! It is a bar code scanner with a Touch Memory button reader and keypad. The ergonomic design provides for one-handed operation for right- or left-handed users, with a direct line of sight from the display to laser beam to the bar code.

The internal memory of the **LaserLite Pro** has both a flash ROM for the operating system and 256 K bytes of battery-backed RAM for the scanner program and scanned data. Its capacity is approximately 2000 transactions. The **LaserLite Pro** has a lightweight extruded and cast aluminum housing with an industrial strength powder-coat finish to provide unbeatable durability!



Specifications

- Light Source Visible laser diode operating at 670 ± 10 nm
- Scan Rate $36 (\pm 3)$ scans per second
- Scan Range 2.5" to 24" (63.6 mm to 609.6 mm)
- Humidity 0 to 95% noncondensing
- Display 2-line x 16 character LCD
- Bar Codes Code 39, Codabar, I-2, UPC, EAN, Code 128 (Benchmate uses Code 39)
- Environment Moisture and dust resistant
- Dimensions W 1.95"/1.75" (49.5/44.4 mm), D 2.19" (55.5 mm), L 7.61" (193 mm)
- Weight 13.5 oz (193 mm)
- Temperature Storage: -4° to 140° F (-20° to 60° C)
Operating: 32° to 122° F (0° to 50° C)
- Warranty One year by manufacturer
- Interface Serial COM port

To guard against unauthorized use, each person using the scanner is given a **Touch Memory Button**. These inexpensive buttons consist of a read-only memory chip sealed in a dime-size stainless steel canister. Each button is uniquely coded to identify the user and is sealed to withstand moisture, radiation and temperature extremes. It is conveniently kept on a key ring in one's pocket.



Scanner Operation

To take or issue a part:

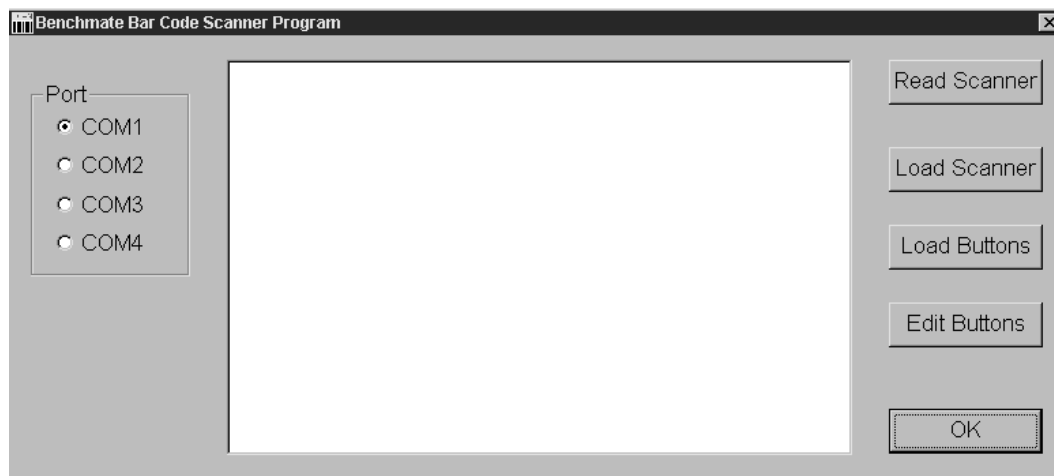
1. Remove scanner from base station.
2. Touch button to scanner to enable scanner and identify user.
3. Scan the JOB ID bar code (printed on each Benchmate work ticket) OR scan Cost Center bar code to identify where the part will be used.
4. Scan the part number label and enter quantity taken.
5. Repeat step 4 for each part taken.
6. Replace scanner in the base station.



The scanner can hold at least 2000 parts transactions – enough to count much of your storeroom or several weeks of activity.

Loading scanner transactions into the Benchmate database is a ‘one-click’ operation which:

1. Reads the scanner
2. Loads the scanner data into the Benchmate Inventory Transaction file,
3. Updates the quantity-on-hand value in the Spare Parts database file and
4. For parts issued to a job, posts the part in the Service Log file.



Installation Information

The scanner's base station includes a 3' cable which connects to a 9-pin COM port on the workstation that operates the Benchmate bar code software. (Longer cables are available if needed.) The battery drain is so low that the four AA size batteries (included) should last for several months. While the scanner provides a battery check function, we suggest you schedule battery replacement every few months or use rechargeable batteries.

Label Printer

Part labels are printed one-at-a time from the Benchmate Spare Parts screen and be applied to the parts shelf, container or the part itself. The Benchmate Part Number is printed in both as a Code 39 bar code and as large text. The Part Name (up to 60 characters) and storeroom Location are also printed on the label.



Benchmate uses the Zebra TLP 2742 bar code printer. This low cost, industrial-strength printer provides years of dependable service. Zebra printers are built to tough ISO 9001 standards.

Thermal Transfer printing provides fade-resistant labels for years of service.

Benchmate ships the label printer with two label rolls, 1 ribbon roll and a 6' cable that connects to a 9-pin (serial) COM port on the workstation that operates the Benchmate bar code software.

Printer Specs:

- Label Size: 4" x 1.5" standard (4" x 1" optional)
- Speed: prints 4" x 1.5" label in about 1 second
- Dot Density: 203 dots per inch, horizontal and vertical (8 dots/mm)
- Label Roll Capacity: ±950 labels for 1.5" labels
- Ribbon Roll Capacity: ±2000 1.5" labels
- Dimensions: 7.9" W x 9.75" D x 6.75" H (200 mm x 247 mm x 171 mm)
- Weight: 4 lbs (1.82 kg)
- Operating Temperature: 40° to 105°F (5° to 40°C), 10% to 90% humidity
- Resident Bar Codes: Code 39, Extended Code 39, Code 93, Code 128, UCC Code 128 Subsets, A, B, and C, Codabar Interleaved 2 of 5, UPC-A, UPC-E and 5 digit add-on, UPC Shipping Container Code, EAN-8, EAN-13, 2 and 5 digit add-on, EAN-128 POSTNET, German Postal Code MaxiCode, PDF-417/Macro PDF-417

NOTE: Benchmate prints and scans Code 39 bar codes. Printer Specs are those provided by the printer manufacturer. Benchmate Systems, Inc. is not responsible for changes in their specifications.

System Requirements

The bar code scanner and label printer must be installed on a PC workstation with:

- Windows XP with Service Pack 2 or Windows 2000 and
- 9 pin COM ports for the label printer and scanner base station (two ports, one each for the scanner and printer, are preferred though a single port may be used and switched to either the scanner or printer)
- COM ports must be available exclusively for Benchmate's use.

The scanner base must be located within 3 ft. of the PC. The label printer must be located within 6 ft. of the PC.



Benchmate Systems, Inc
PO Box 669
Coupeville, WA 98239

Phone: 360 678-8358

Fax: 360 678-8350

Web: www.benchmate.com

E-mail: info@benchmate.com